

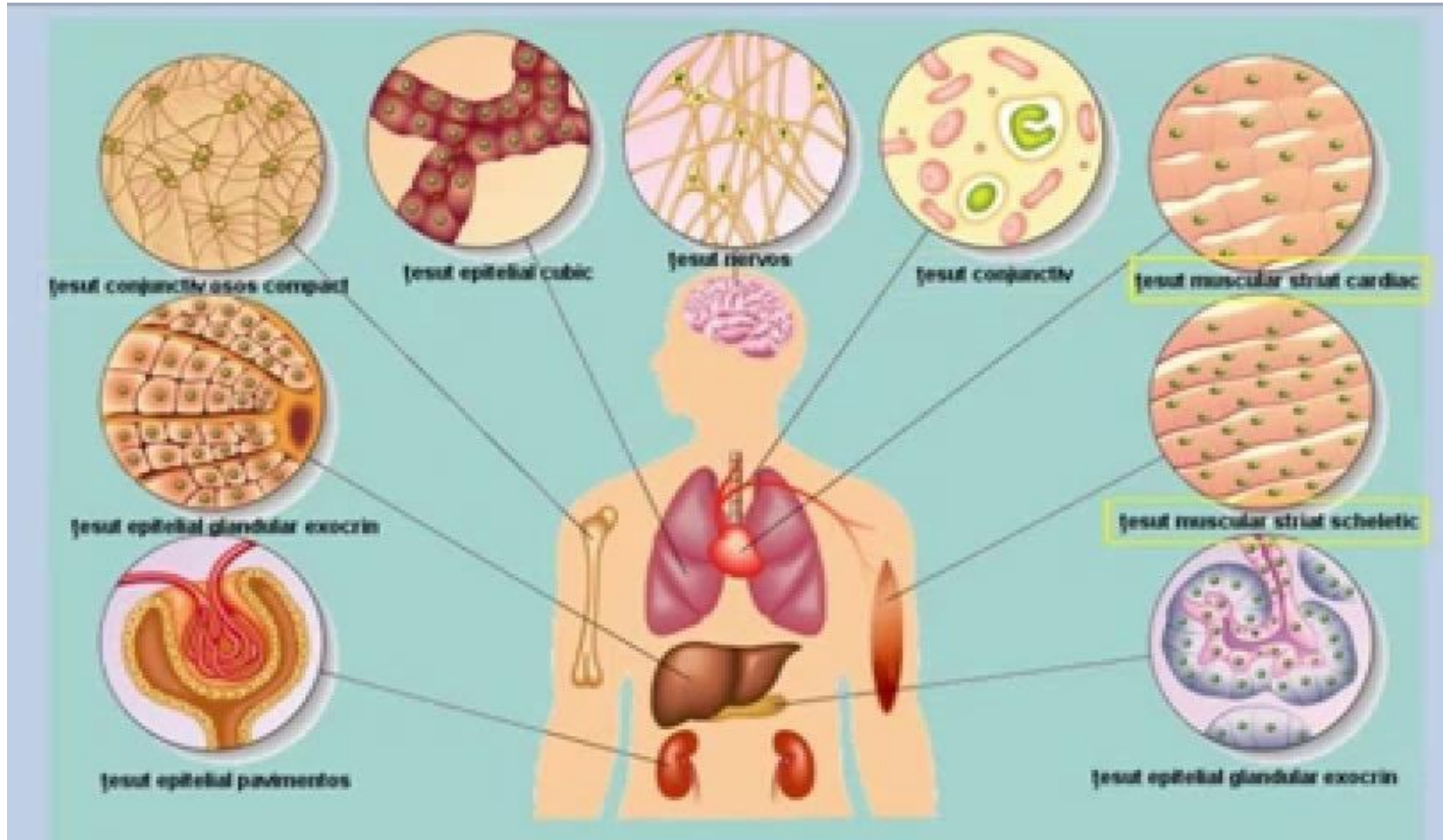


# TESUTRI

Vedere la microscop a mucoasei uretral

# TIPURI DE TESUTURI

După structura și forma celulelor, respectiv după funcția pe care o îndeplinesc în organism, se deosebesc patru mari categorii de țesuturi:



## TESUT EPITELIAL UNISTRATIFICAT

### ORGANUL IN CARE SE GASESTE

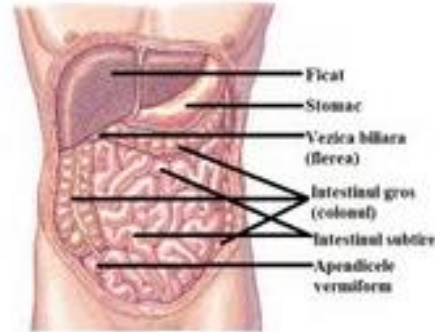
(A)

#### PAVIMENTOS



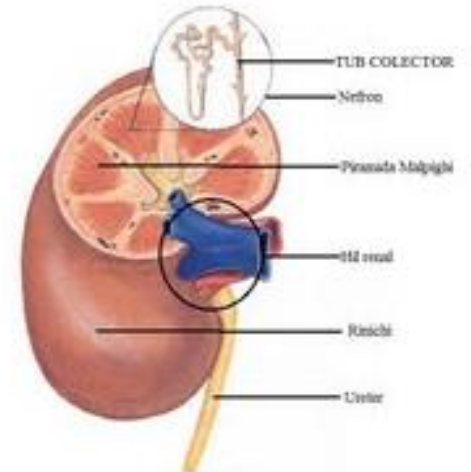
endoteliul vaselor sanguine

#### CILINDRIC



vilozitati intestinale

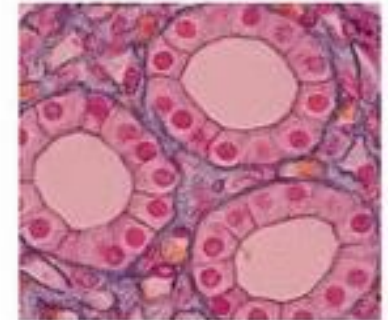
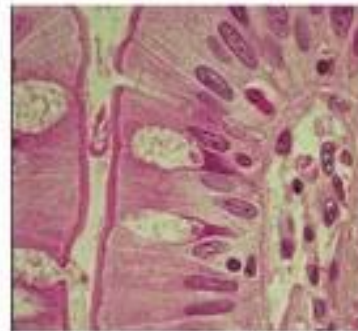
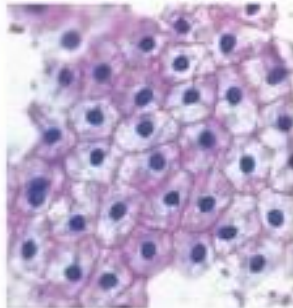
#### CUBIC



tubi colectorii

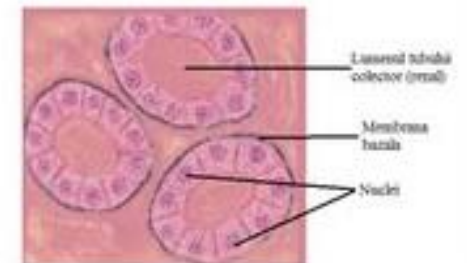
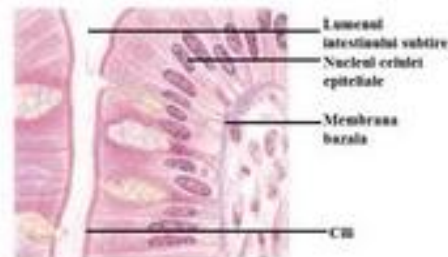
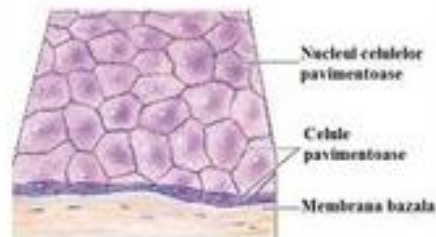
### IMAGINE MICROSCOPICA

(B)



### SCHEMA

(C)

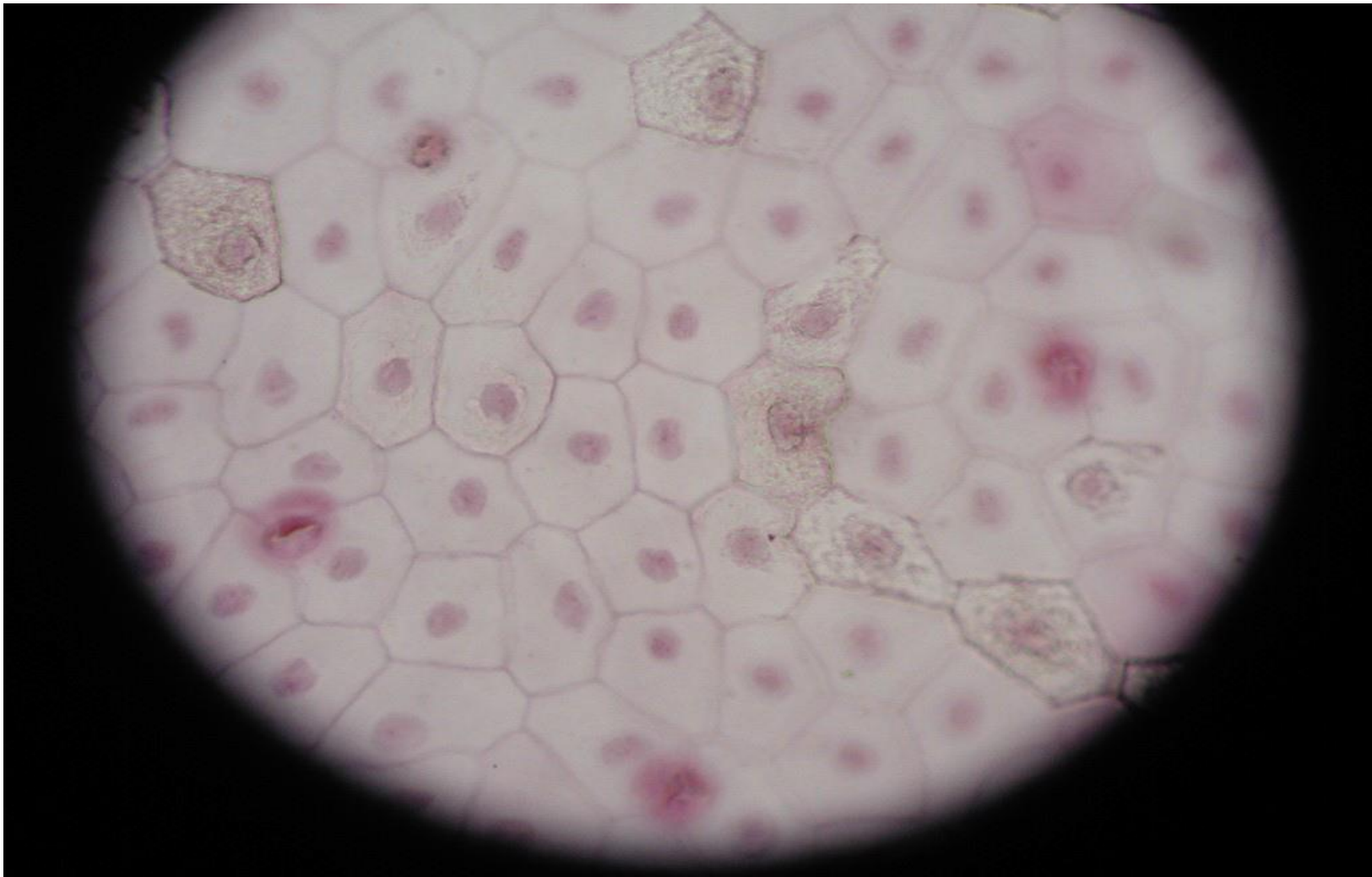


**Tesuturi epiteliale  
unistratificate  
- *vilozitati intestinale***

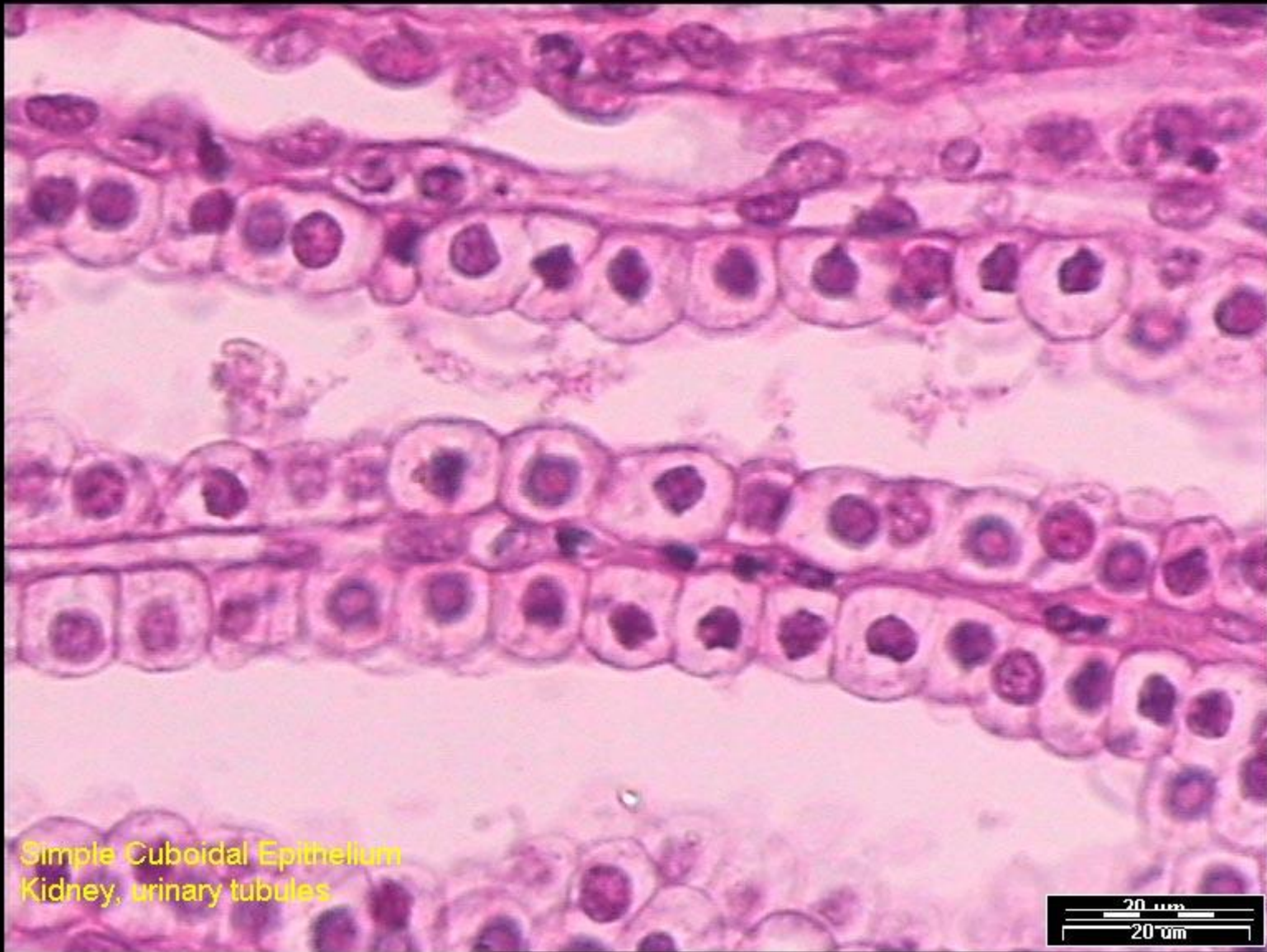


# Tesuturi epiteliale unistratificate

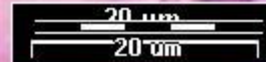
## Epiteliul pavimentos simplu



# Epiteliul cuboidal simplu

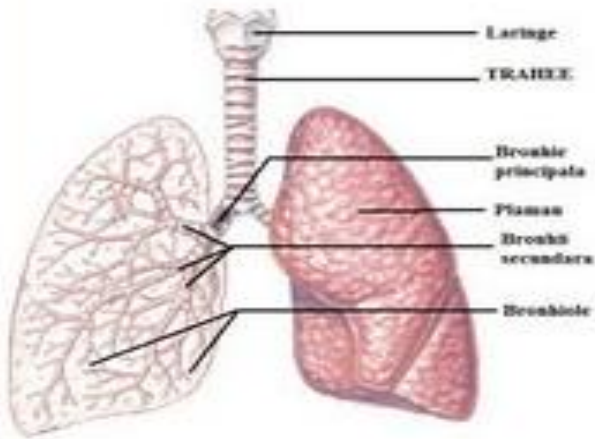


Simple Cuboidal Epithelium  
Kidney, urinary tubules

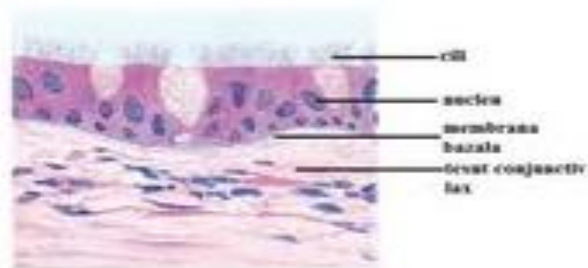
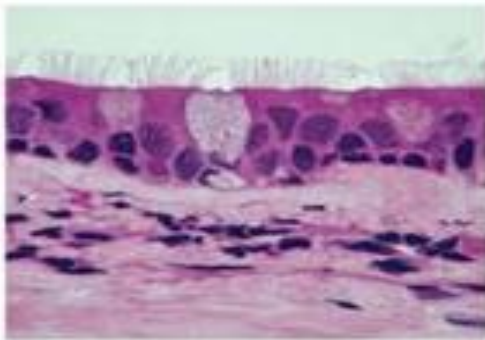


# TESUT EPITELIAL PSEUDOSTRATIFICAT

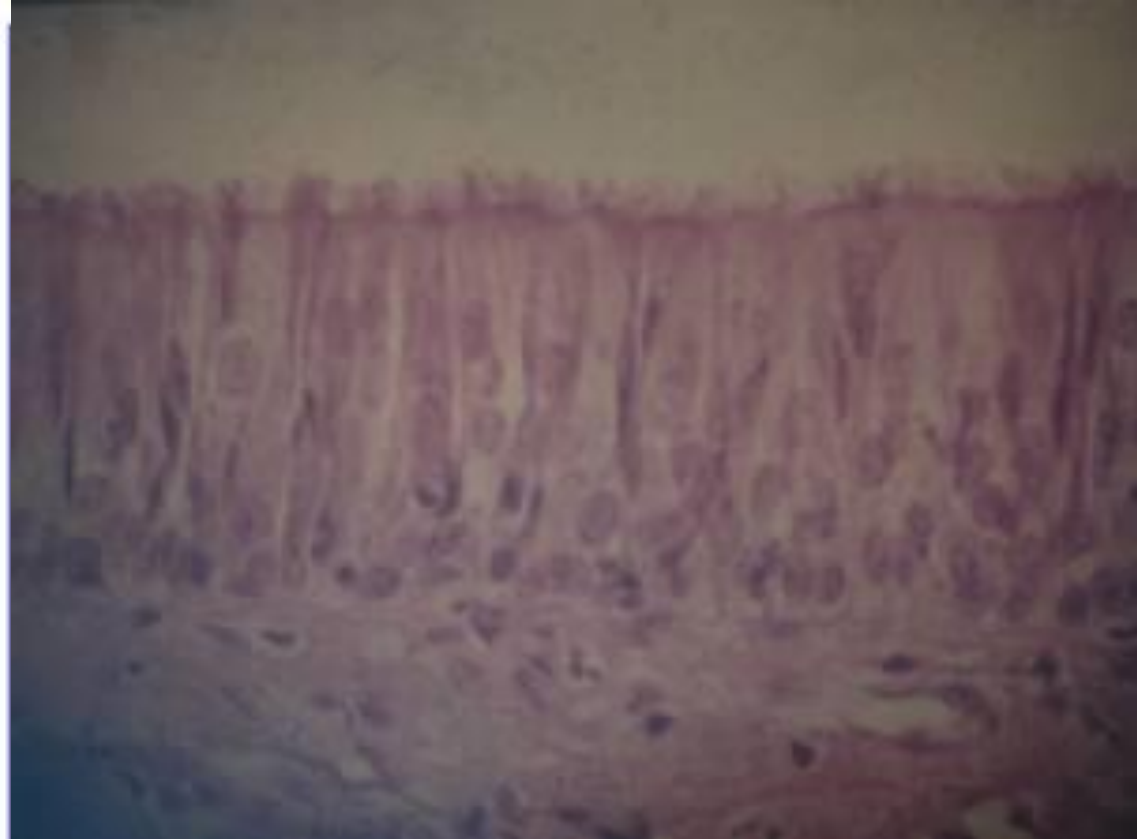
CILIAT



trabee / bronhii principale



(4)



## Tesut epitelial pseudostratificat cilindric

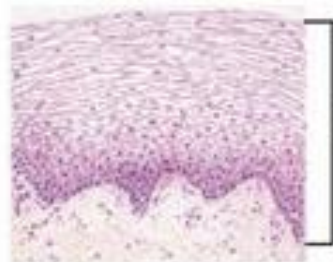
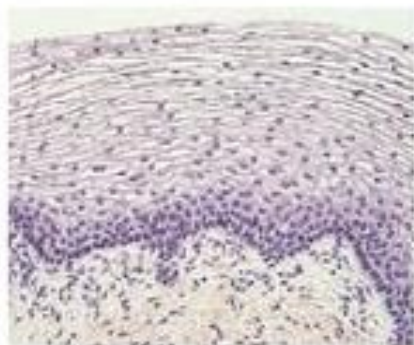
- sectiune la nivelul traheei
- celule inalte, cilindrice
- la polul apical -cili

# TESUT EPITELIAL STRATIFICAT

## PAVIMENTOS

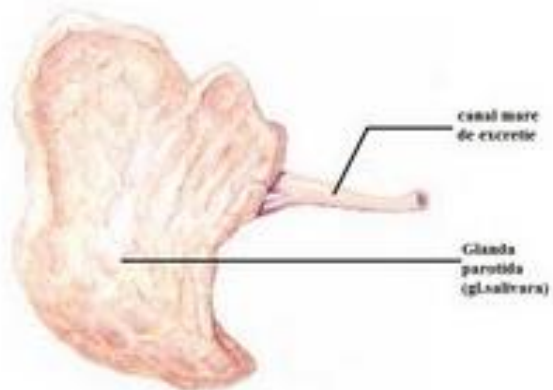


mucoasa vaginala

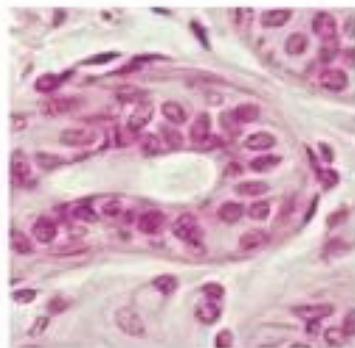


straturi de celule  
epiteliale  
pavimentose

## CUBIC

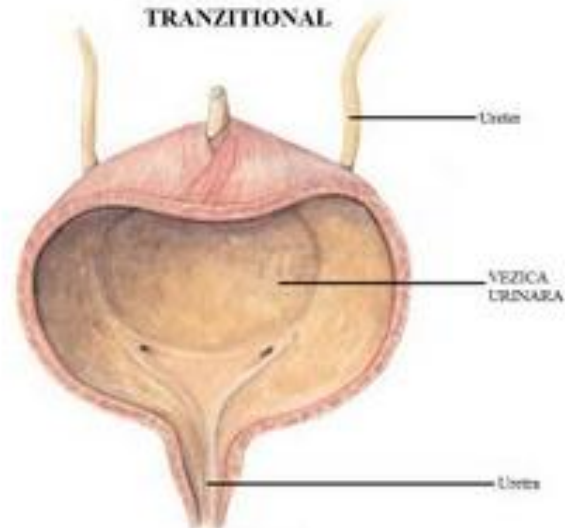


canalele mai de excreție ale unor glande

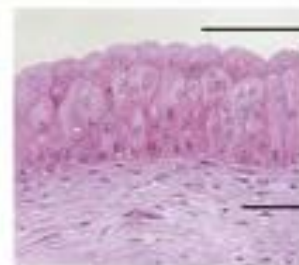


Nuclei  
Lumenul canalului de  
excreție  
Membrana  
bazala

## TRANZITIONAL



mucoasa vezicii urinare



Lumenul esofagian  
Straturi de celule  
cilindrice  
Tesut muscular  
neted

## Tesut epitelial polimorf – UROTELIU sau de tranzitie

- stratul bazal identic cu cel cheratinizat
- stratul mijlociu (intermediar) format din mai multe celule epiteliale ( forma „rachete de tenis” )
- stratul superficial format dintr-un sg strat de celule epiteliale mari care seamana cu o umbrela deschisa
- membrana bazala e mai subtire decat in cazul altor tesuturi de acoperire

## Tesut epitelial pavimentos cheratinizat

- stratul superficial al pielii
- stratul bazal
- strat spinos – format din  
celule epiteliale, poligonale,

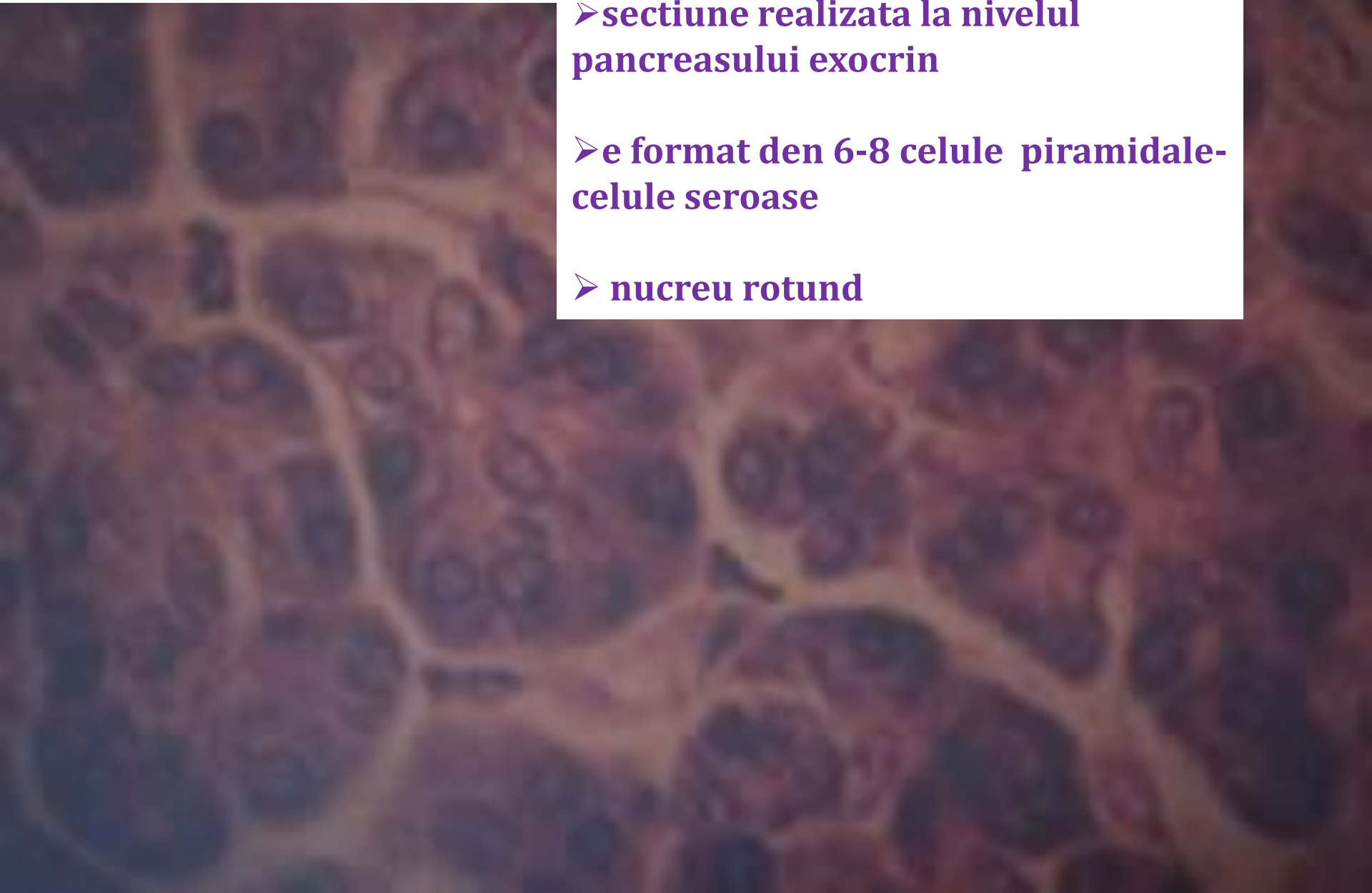


# Epiteliu glandular

➤ secțiune realizată la nivelul  
pancreasului exocrin

➤ e format din 6-8 celule piramidale-  
celule seroase

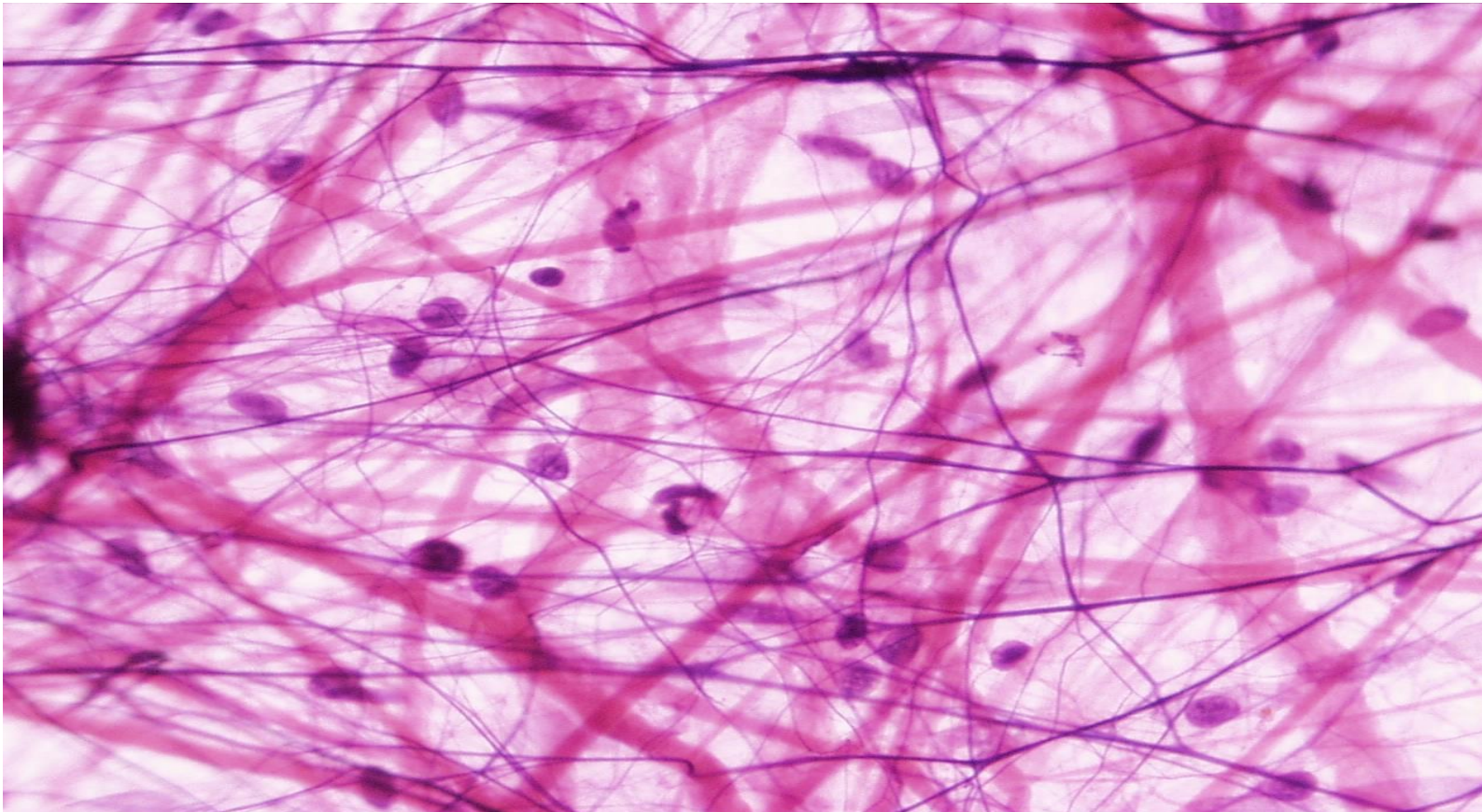
➤ nucleu rotund



# TESUTUL CONJUNCTIV

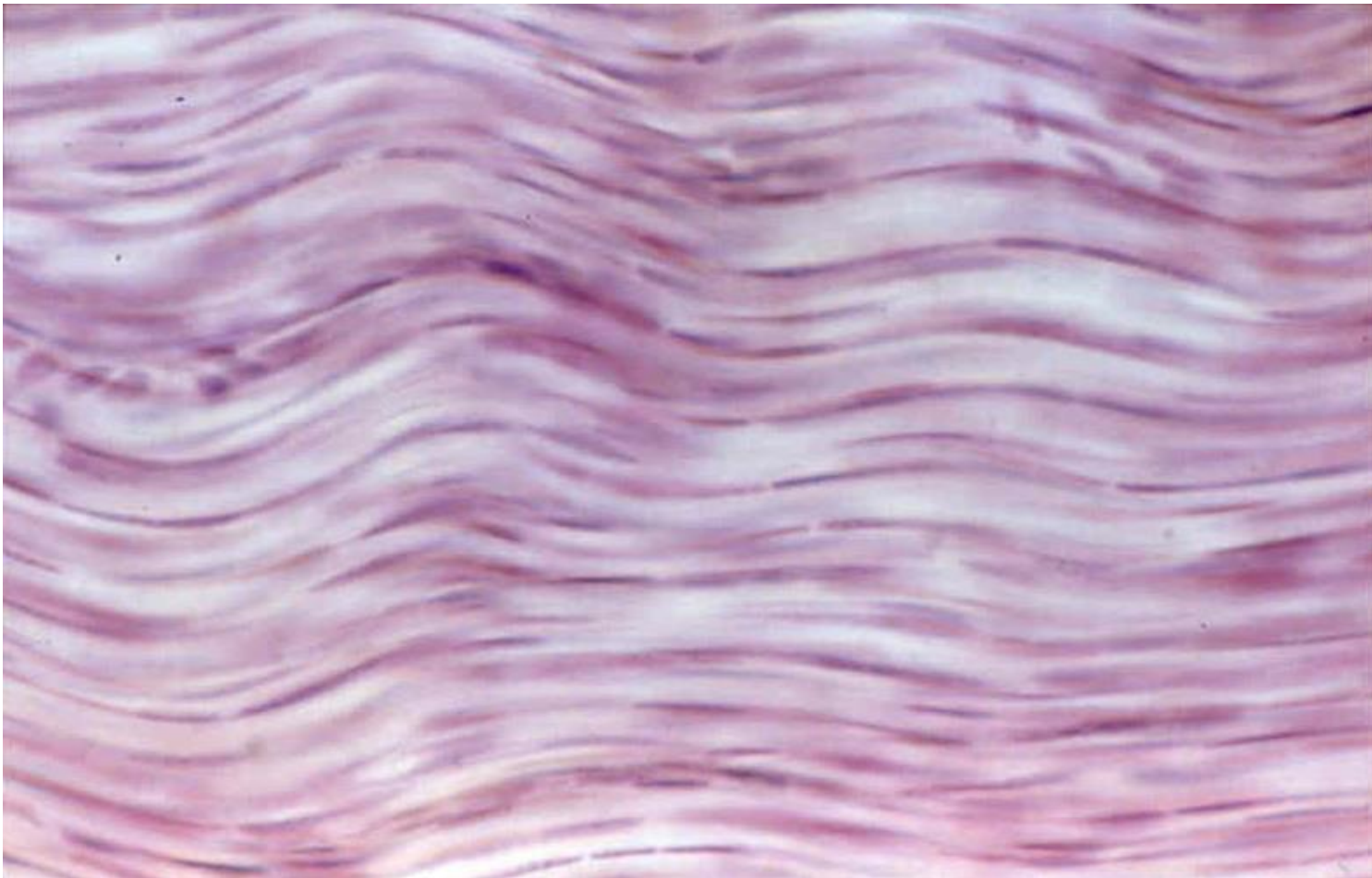
## Țesuturile conjunctive moi

### *Tesutul lax*



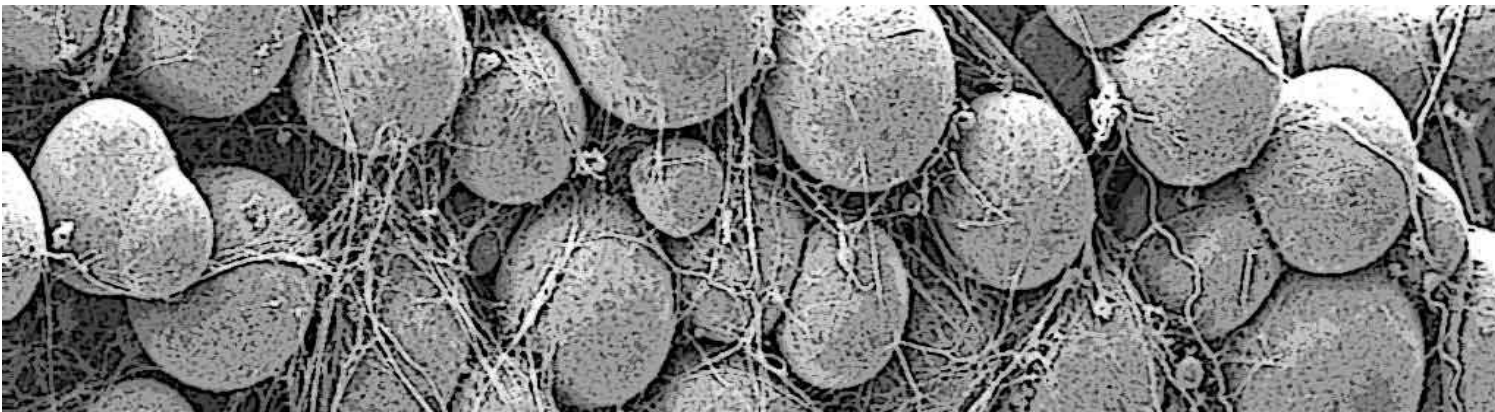
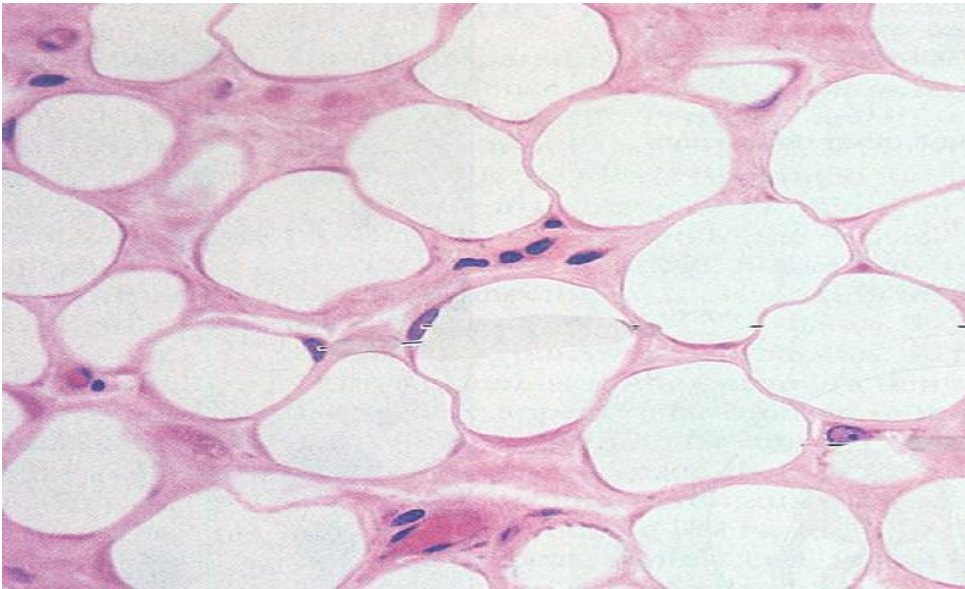
# Țesuturile conjunctive moi

## *Țesutul fibros*



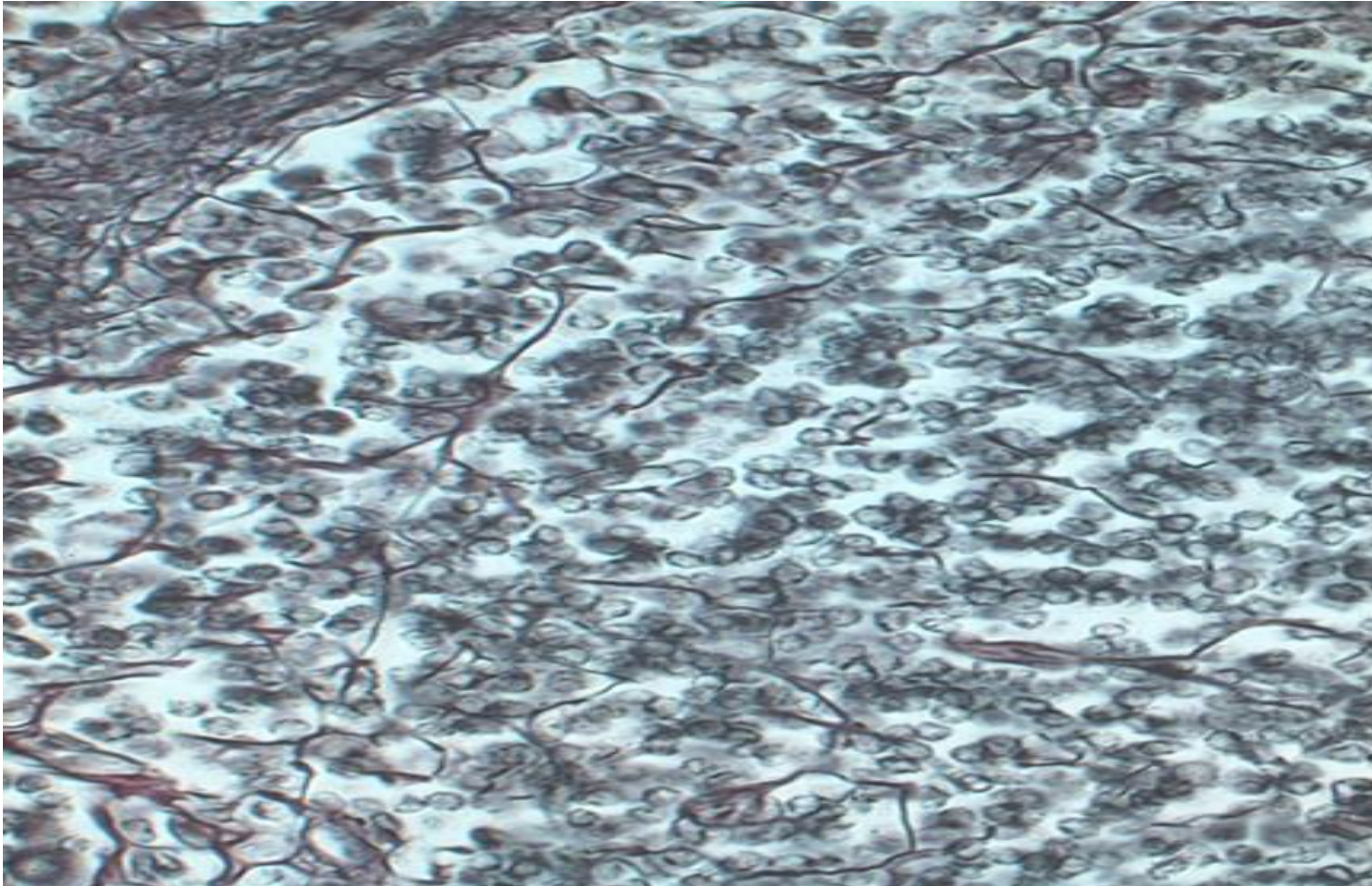
# Țesuturile conjunctive moi

## *Tesutul adipos*



# Țesuturile conjunctive moi

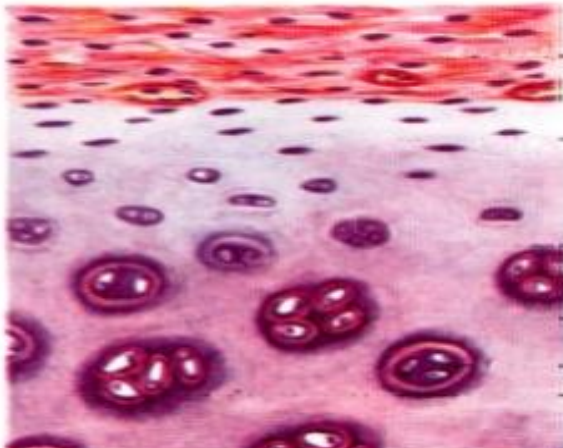
## *Tesutul reticulat*



# Țesutul conjunctiv semidur

## Țesut cartilagos:

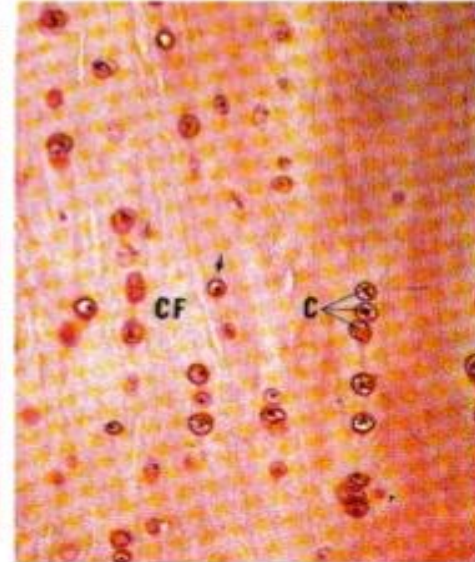
hialin



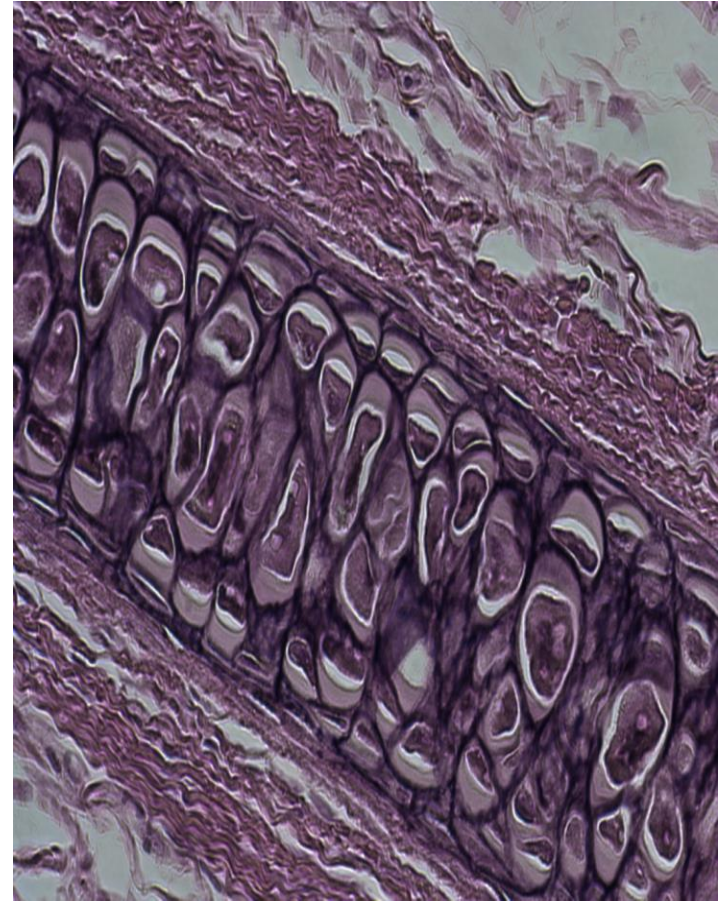
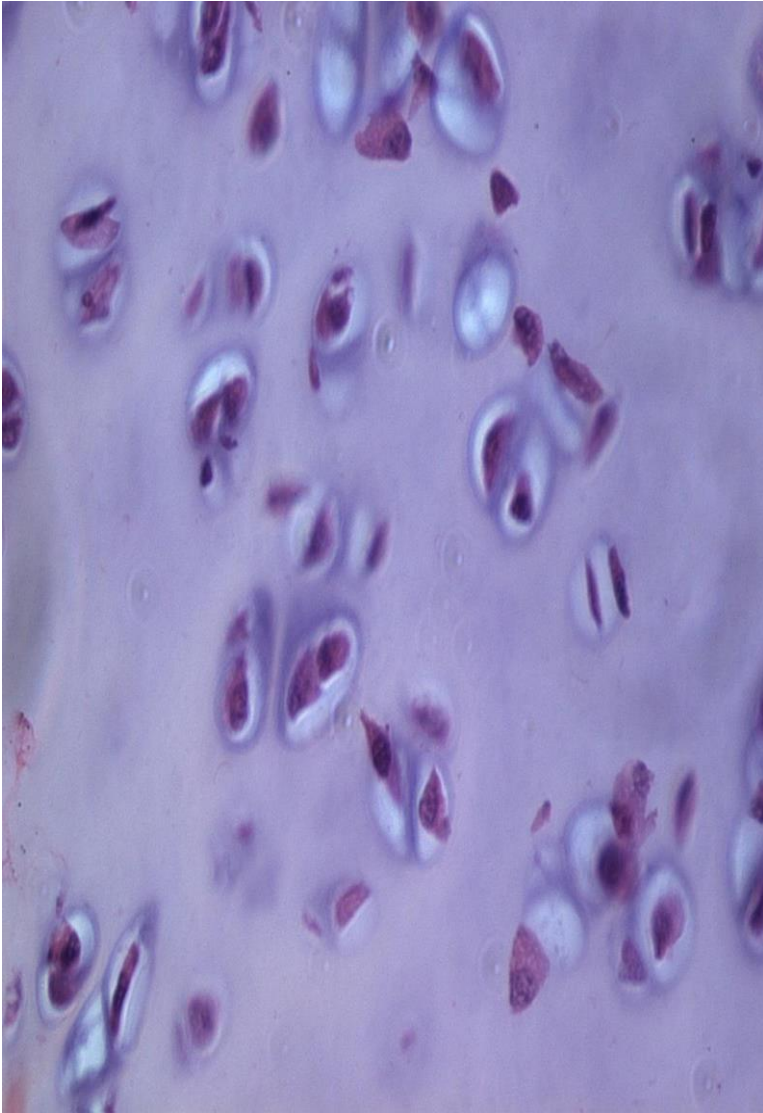
elastic



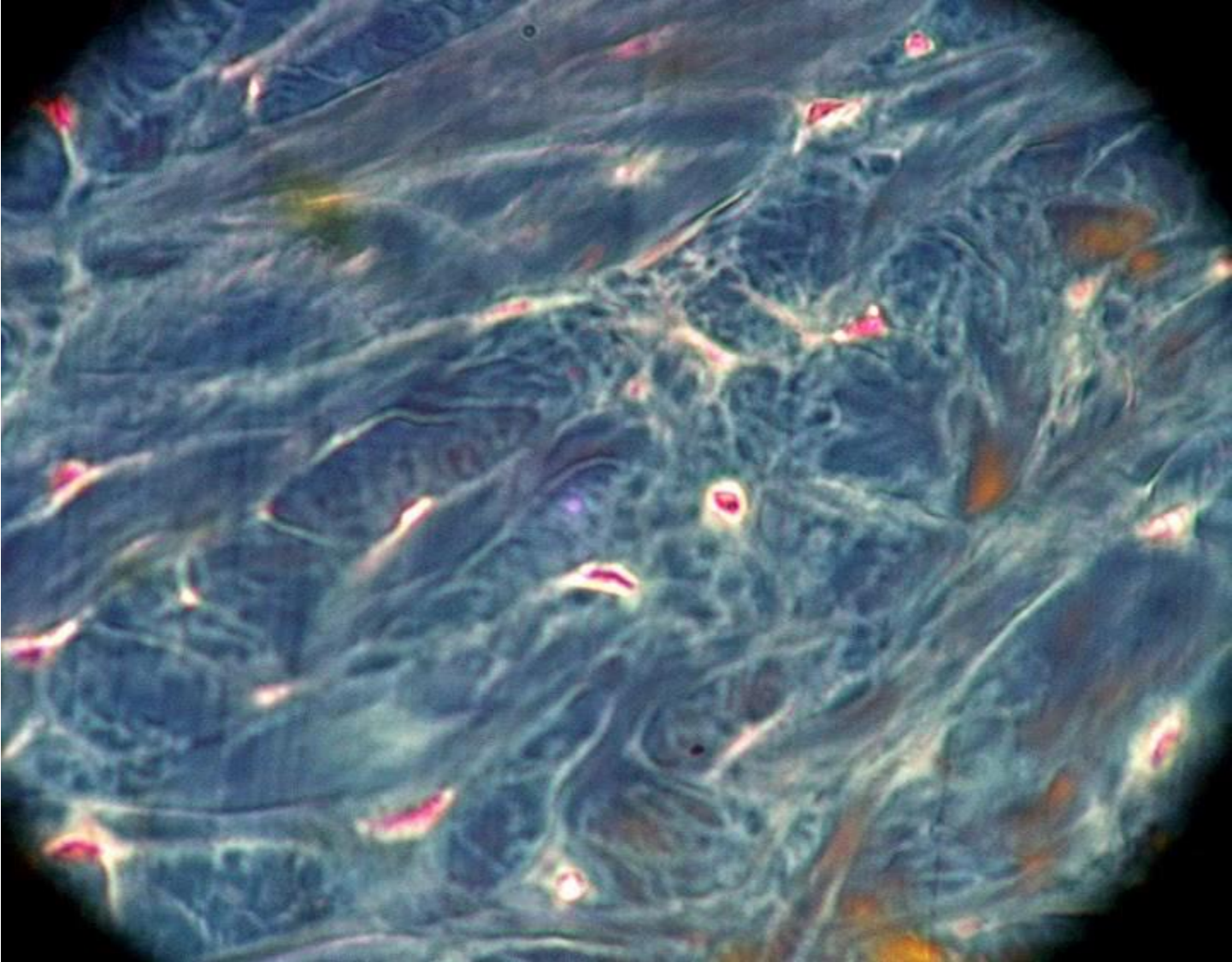
fibros



# *Cartilaj hialin*



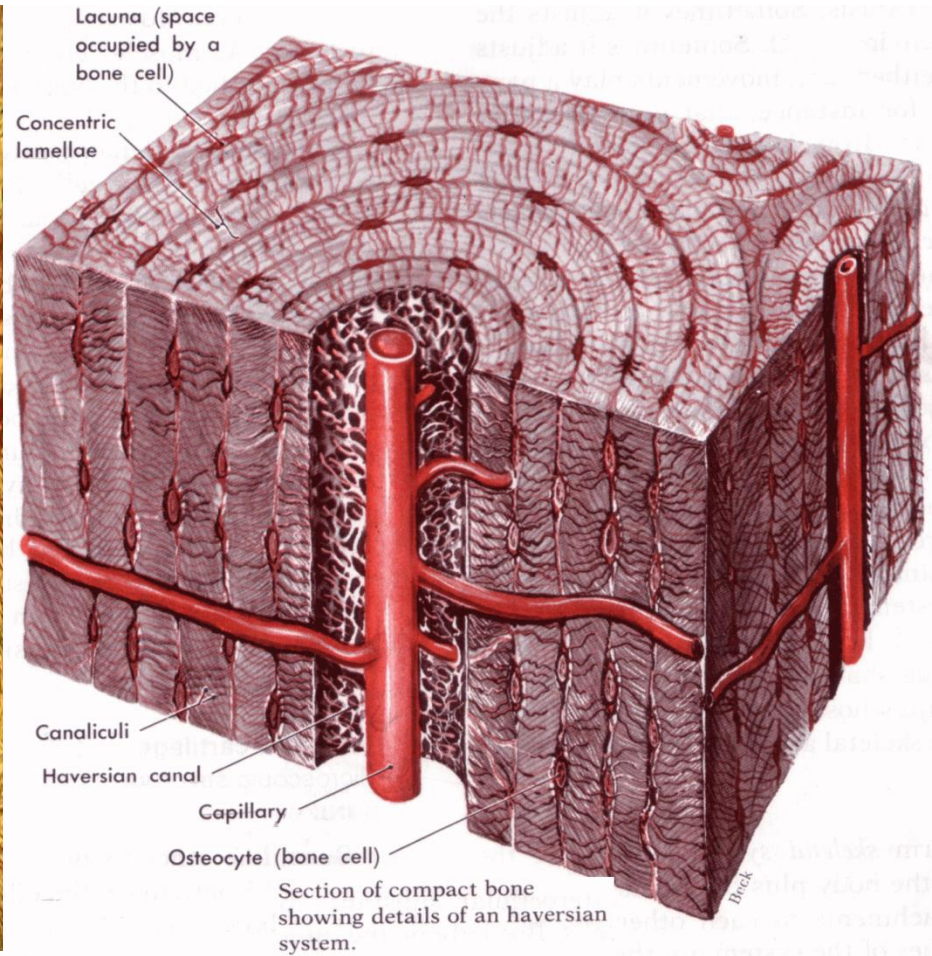
*Cartilaj elastic*



*Cartilaj fibros*

# Țesutul conjunctiv dur

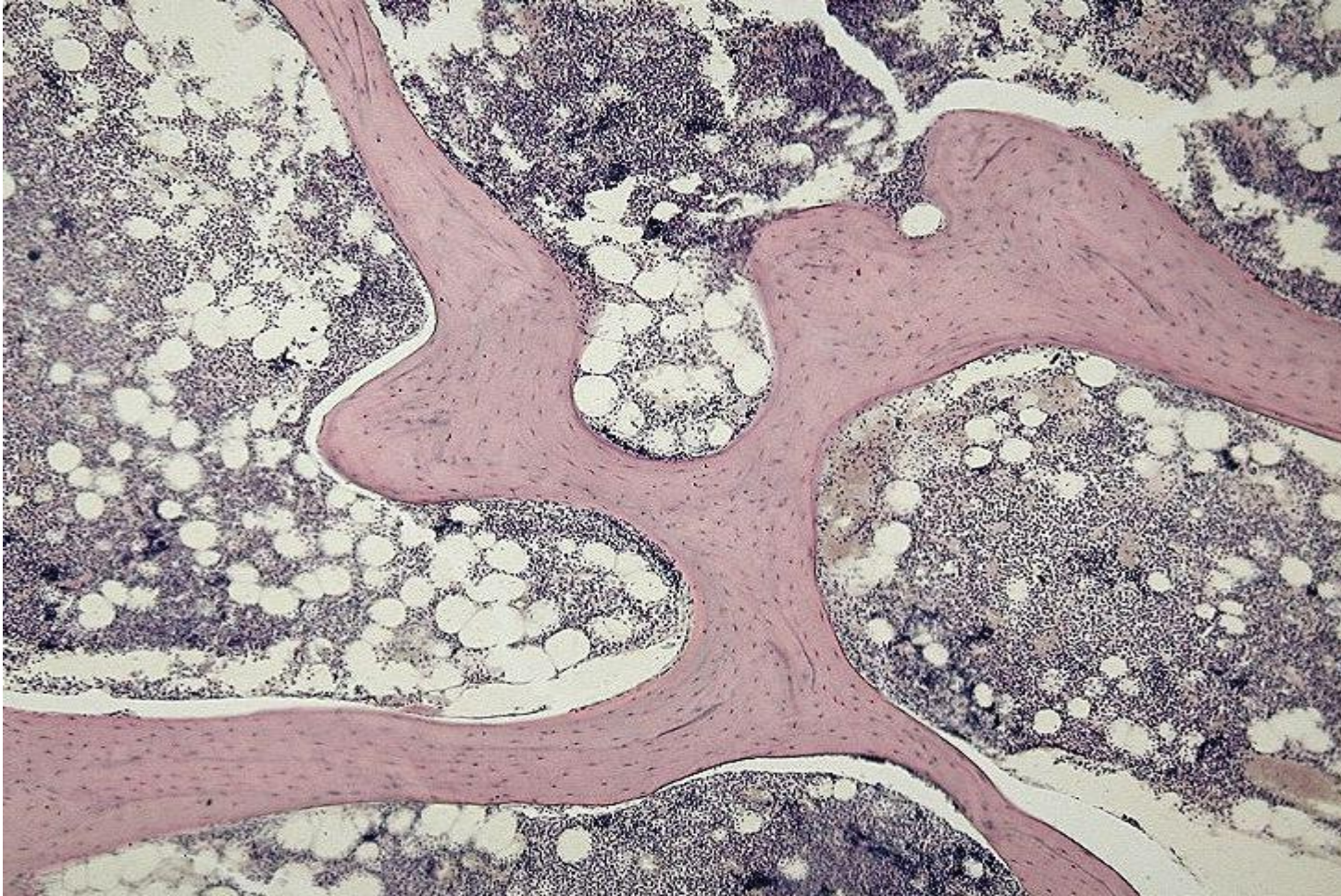
## *Țesutul osos compact*

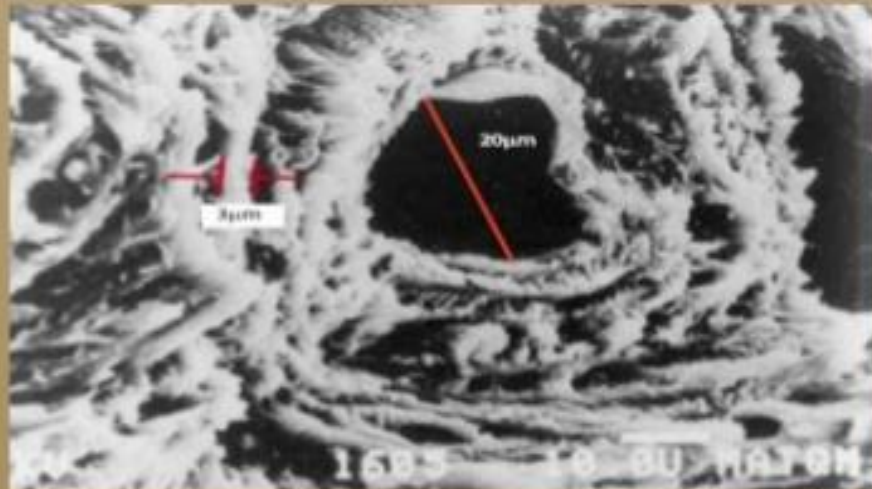
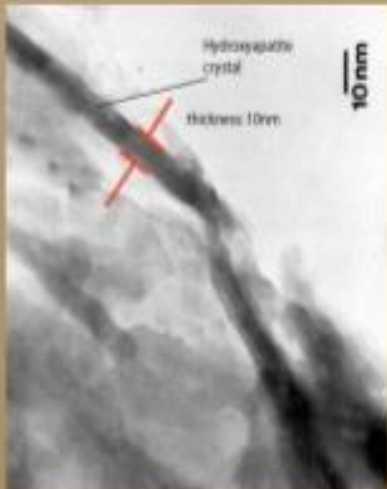
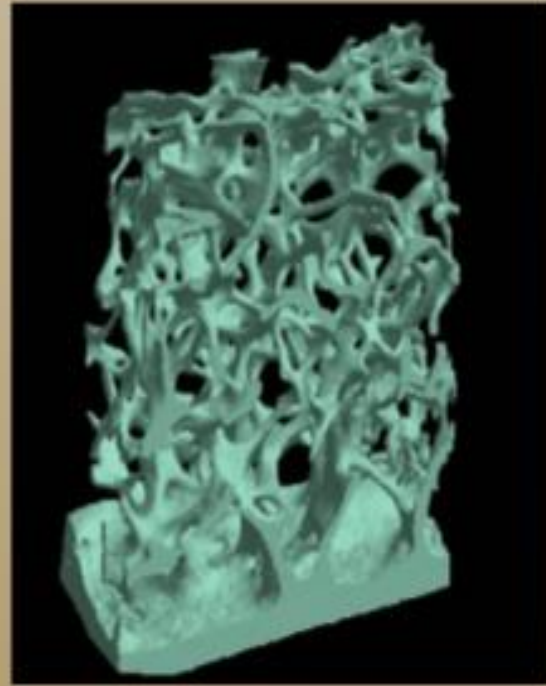


Section of compact bone showing details of an Haversian system.

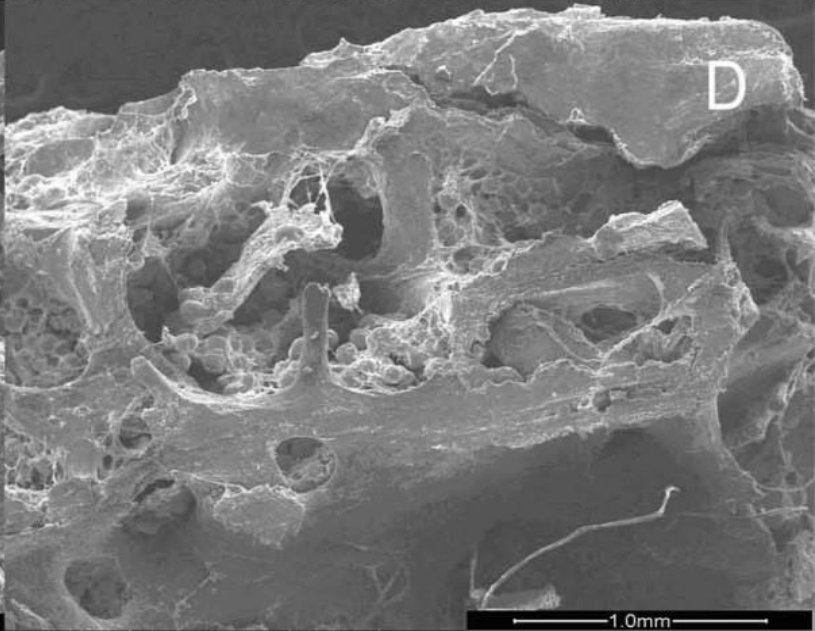
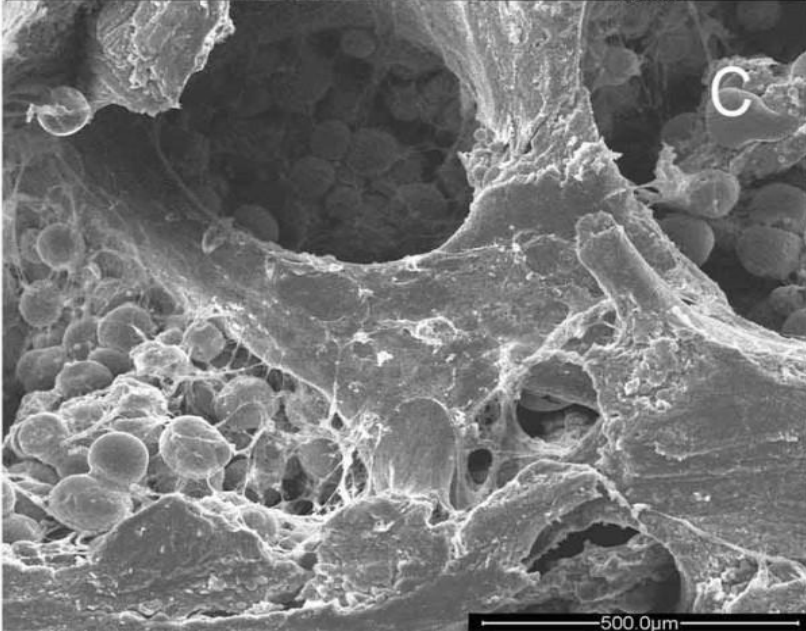
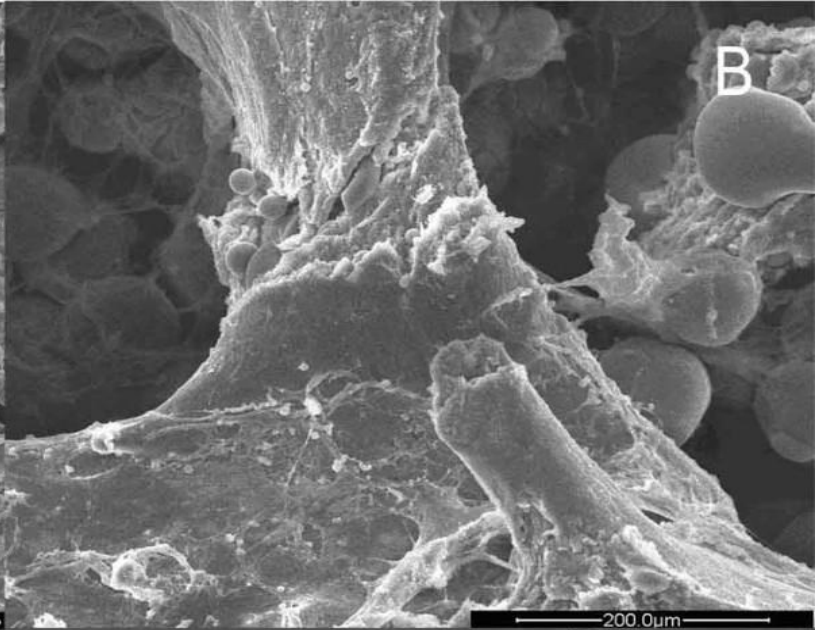
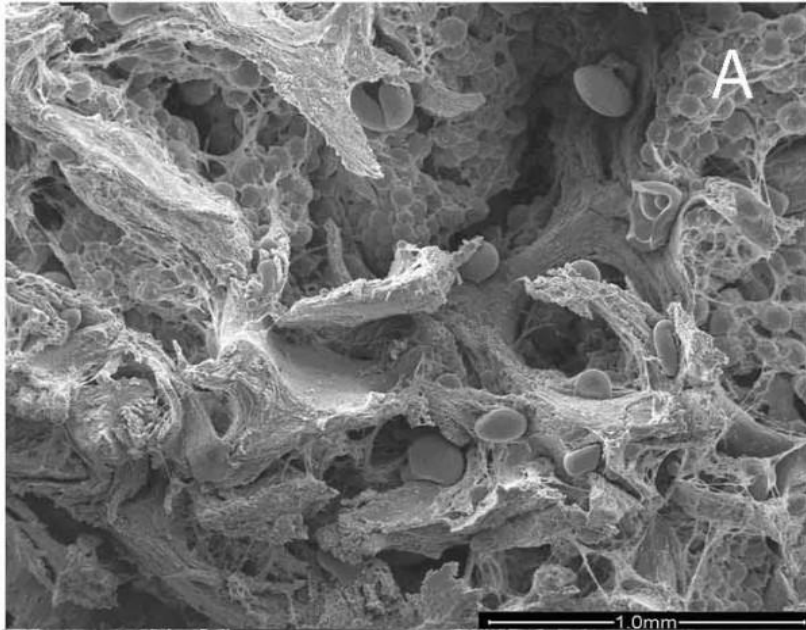
# Țesutul conjunctiv dur

*Țesutul osos spongios*

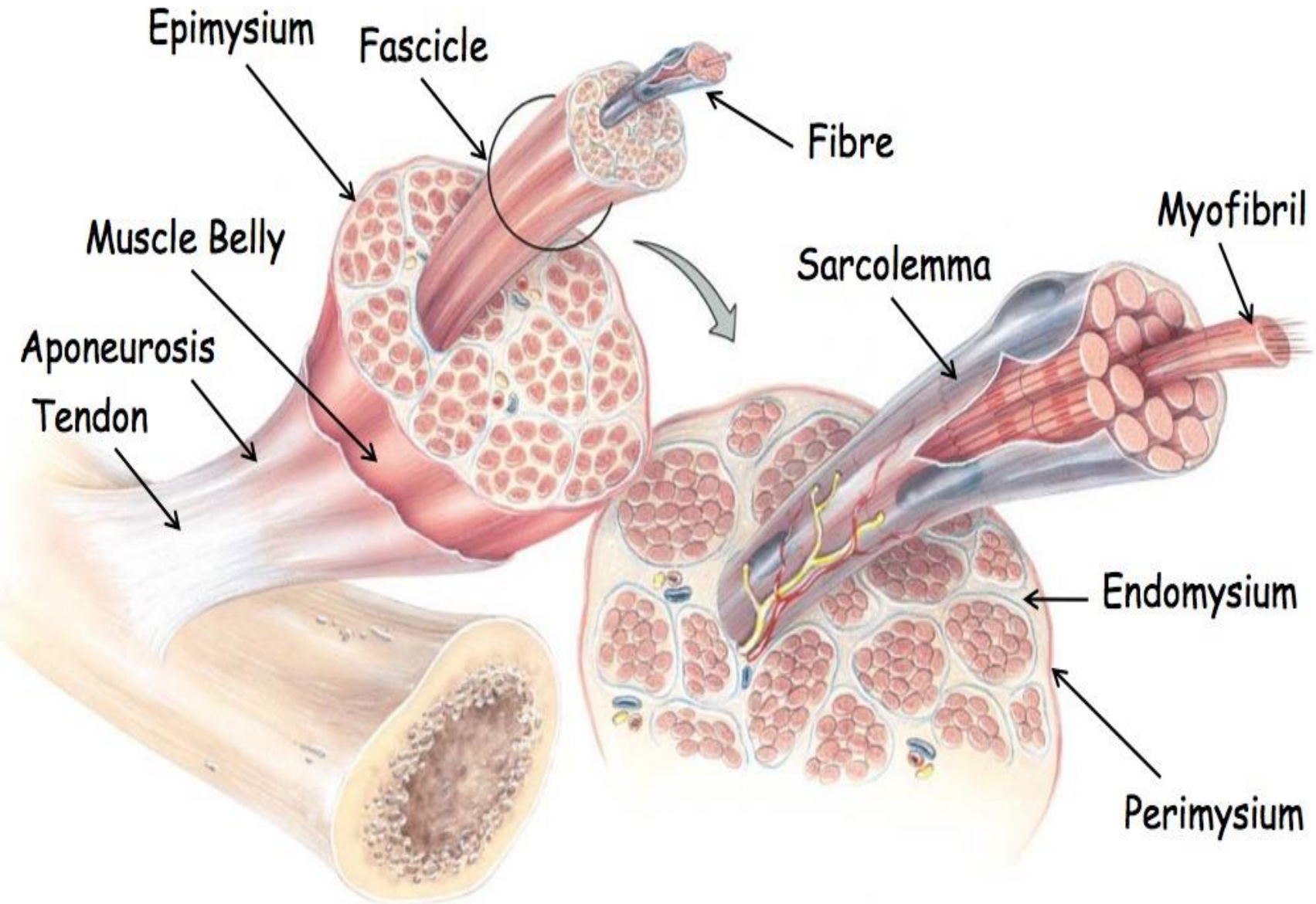




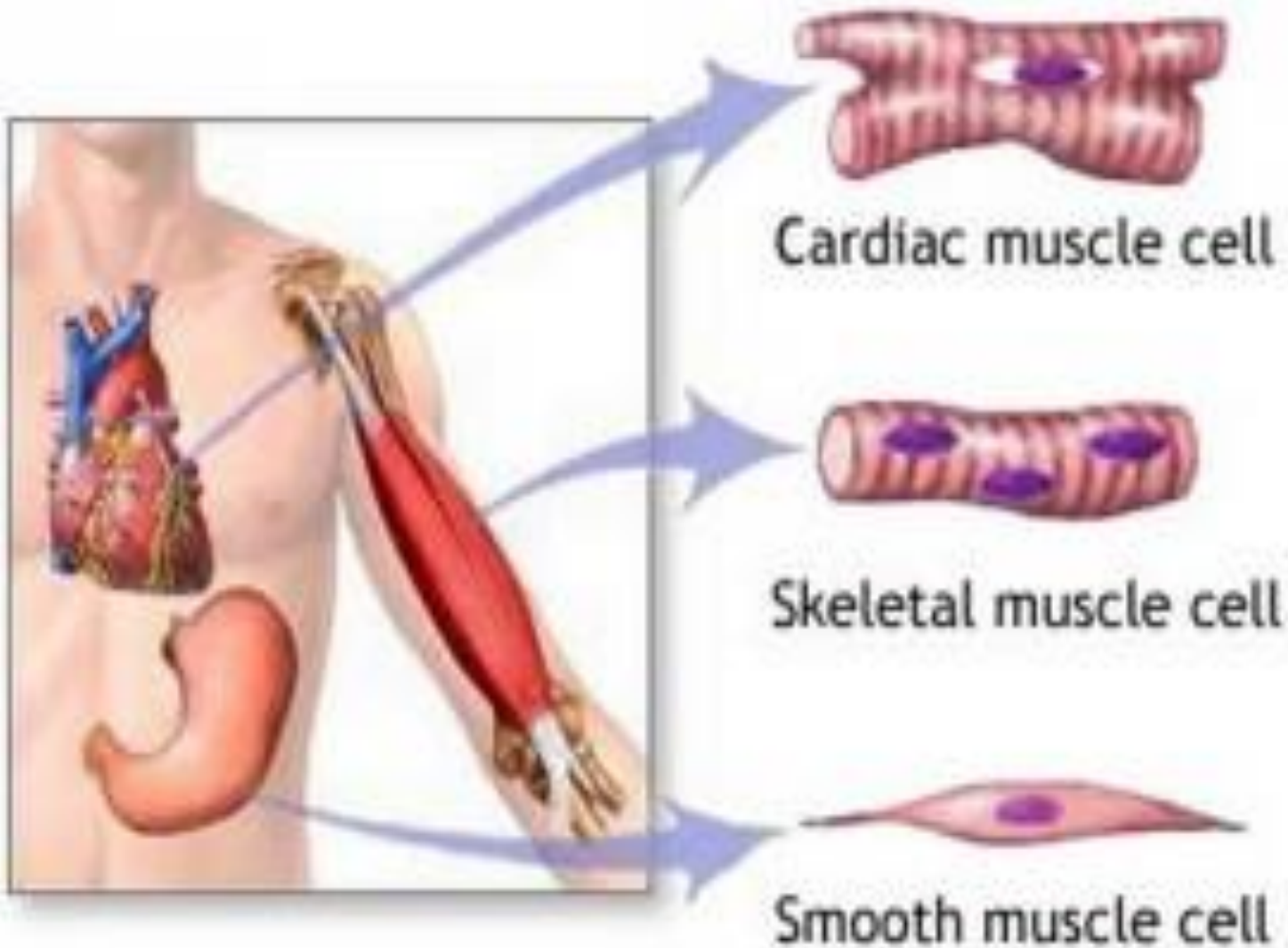
Imagini electronmicroscopice ale țesutului osos



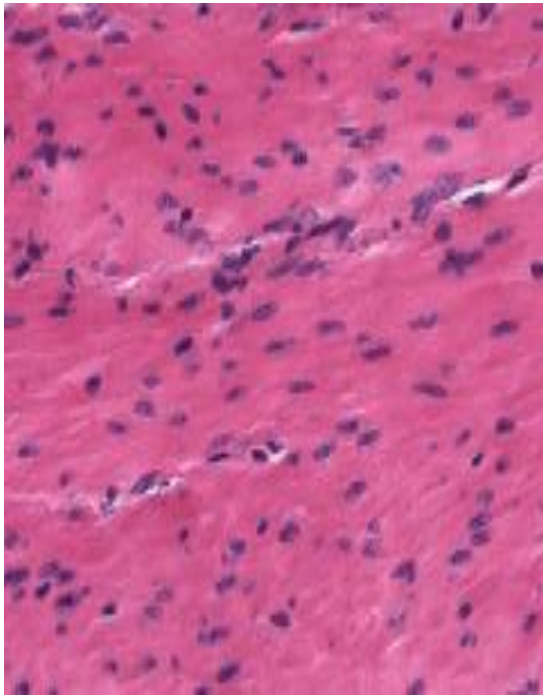
# TESUT MUSCULAR



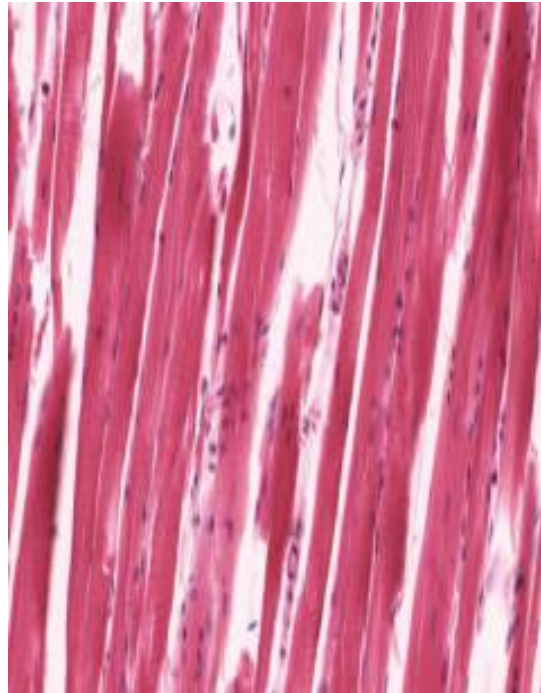
# TESUT MUSCULAR



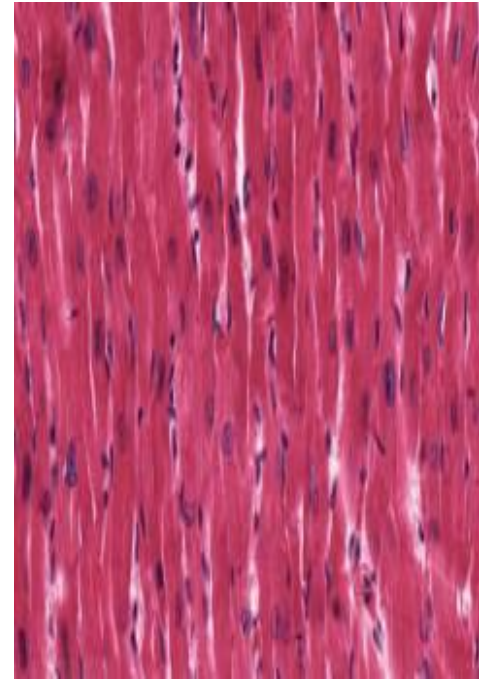
# TESUT MUSCULAR



**Tesut muscular  
neted**



**Tesut muscular  
striat**



**Tesut muscular  
cardiac**